

Detection of driver mutations in FFPE samples from patients with verified malignant melanoma

B. MALICHEROVA^{1,2,*}, T. BURJANIVOVA^{1,2,*}, E. MINARIKOVA³, I. KASUBOVA^{1,2}, T. PECOVA³, M. BOBROVSKA⁴, I. HOMOLA⁵, Z. LASABOVA^{1,2,6}, L. PLANK^{1,2,4}

¹Biomedical Center Martin, Jessenius Faculty of Medicine in Martin, Comenius University in Bratislava (JFM CU), Slovakia; ²Division of Oncology JFM CU, Martin, Slovakia; ³Clinic of Dermatovenerology, Jessenius Faculty of Medicine and University Hospital in Martin, Martin, Slovakia; ⁴Department of Pathological Anatomy, Jessenius Faculty of Medicine and University Hospital in Martin, Martin, Slovakia; ⁵Department of Plastic Surgery, Jessenius Faculty of Medicine and University Hospital in Martin, Martin, Slovakia; ⁶Department of Molecular Biology, JFM CU, Martin Slovakia

*Correspondence: bibiana.malicherova@gmail.com

*Contributed equally to this work.

Received January 15, 2018 / Accepted April 24, 2018

Malignant melanoma is an oncological disease characterized by etiologic heterogeneity and it has increasing incidence and mortality in the Slovak Republic. While it is treated surgically in combination with chemotherapy, targeted therapy, and immunotherapy, malignant melanomas can ulcerate and are susceptible to infections. These are highly aggressive cancers with metastasis, and recent studies have shown the presence of mutations in RAC1, PPP6C and STK19 genes in melanoma patients. Mutations in these genes are driver mutations; important in oncogenesis and providing selective advantage to tumor cells. The aim of our study is to establish a method to detect driver mutations in formalin-fixed, paraffin embedded (FFPE) tissue DNA. We applied Sanger sequencing to detect driver somatic mutations in RAC1, PPP6C, STK19 and BRAF genes in patients with malignant melanoma. Confirmation of BRAF V600E mutation was obtained by allele-specific PCR. The BRAF V600E mutation was present in 15 of 113 patients (13.2%) and the driver mutation in 7 of 113 patients (6.2 %). Our results demonstrate that Sanger sequencing analysis detects mutations in FFPE clinical samples. The identification of these somatic driver mutations in samples with verified malignant melanomas enabled development of a molecular classification of melanomas, and our study provides evidence of diversity of novel driver mutations implicated in malignant melanoma pathogenesis. These findings could have very important implications for targeted therapy.

Key words: malignant melanoma, genetic analysis, driver mutations, diagnostic biomarker

The incidence of malignant melanomas has been increasing around the world, mainly in Caucasians. People with red hair and fair skin have a higher chance of developing melanoma. In the Slovak Republic, although malignant melanoma incidence is not high compared to other malignant tumors, it has relatively high mortality, especially when detected in advanced stages of the disease. The key risk factor for its appearance is exposure to UV radiation, so tumor may be prevented in predisposed people by avoiding direct sunlight and use of protective agents

Newer techniques of molecular biology improve the prognosis of the disease because these allow us to find genetic changes in nucleic acids, increase the specificity of diagnostic criteria and reduce time for patient diagnosis [1]. The exact mechanism for initiation of tumorigenesis of malignant

melanoma is associated with constitutive activation of the mitogen-activated protein kinase pathway (MAPK). This is a complex signaling pathway with RAS/RAF proteins and other protein kinases including MEK and ERK. This pathway appears to be critical for the growth-phase of melanoma [2] and it is estimated that almost half malignant melanomas are associated with a MAPK activation mutation [3, 4].

A typical initiating oncogene involved in the MAPK pathway is a BRAF gene mutation (B-Raf Proto-Oncogene, Serine/Threonine Kinase). Over 60% of melanomas carry a BRAF gene mutation, and 80% of these carry the BRAF V600E mutation [5, 6]. For patients with metastatic melanoma and BRAF V600E driver mutation, therapy targeting the mitogen-activated protein kinase pathway – a combination of BRAF inhibitors and MEK inhibitors – is an important treatment

option [7]. The incidence of mutations in the *BRAF* and *NRAS* genes is significantly increased in skin melanomas not chronically exposed to UV radiation [8–12].

Other genes also have features which suggest a role in melanoma oncogenesis; three of these are protein phosphatase 6 catalytic subunit (*PPP6C*), Ras-related C3 botulinum toxin substrate 1 (*RAC1*) and serine/threonine kinase 19 (*STK19*). Mutations in *STK19* (a predicted kinase with an unknown function) generally cluster around hot-spot regions, and subsequent somatic hotspot point mutations provide strong evidence that *STK19* is a novel cancer gene in melanoma [12]. Activating mutations in *RAC1* gene have been identified in 4% of all melanomas [12] and in 9% of sun-exposed melanomas [13].

RAC1 is a member of Rho family of small GTPases which have an important role in the control of cell proliferation and cell migration. The *RAC1* gene is associated with the

assembly of actin filaments at the leading edge of cells [14], and it has recently been described as a common mutation in cutaneous melanomas together with *BRAF* and *NRAS*; and it is the third most frequent hotspot gain-of-function mutation in sun-exposed melanomas. *RAC1* mutation is associated with UV damage [15] but a further newly discovered melanoma-associated gene is the *PPP6C* potential tumor suppressor gene [12]. *PPP6C* encodes the catalytic subunit of the *PP6* serine/threonine phosphatase complex. This gene has been reported to play an important role in several cancer-related pathways, including de-phosphorylation of Aurora kinase A which regulates mitosis [16]. Results from both groups included *R264C* mutations in *PPP6C*, thus indicating a tumor suppression function for this protein in melanoma [13]. *PPP6C* mutations may result in the loss-of-function typical for a tumor suppressor, and while *PPP6C* mutations occur in melanoma patient primary tumors and metastases, the cells with *PPP6C* mutations are sensitive to Aurora kinase inhibitors. This has therapeutic implications [16] because identification of mutations in cancer cells that drive malignant transformation may provide targeted therapy that improves overall survival [13].

Table 1. Clinical-pathological data of the cohort of 113 malignant melanomas, from the Department of Dermatovenereology, University Hospital in Martin, 62 men and 51 women, diagnosed in years 2015–2017.

Patients	No. of patients n=113(%)
Men	62 (54.8%)
Women	51 (45.1%)
Average age	
Men	63.9 (yr)
Women	64 (yr)
Types of melanoma	
Superficial spreading melanoma	48 (42.4%)
Nodular melanoma	34 (30.0%)
Acral lentiginous melanoma	6 (5.3%)
Lentigo malignant melanoma	4 (3.5%)
Unspecified type of melanoma	9 (7.9%)
Melanoma in situ	9 (7.9%)
Desmoplastic malignant melanoma	1 (0.88%)
Medium and late regression malignant melanoma	1 (0.88%)
Stage (pT) status, Thickness of malignant melanoma	
Tx unidentified	3 (2.6%)
T1 0-1mm	17 (15.0%)
T2 1,1-2,0 mm	26 (23.0%)
T3 2,1-4,0 mm	45 (39.8%)
T4 more than 4,1 mm	22 (19.4%)
Lymph node metastases status (pN)	
Nx	91(80.5%)
N1 1lymph node	8 (7.1%)
N2 2-3lymph nodes	9 (7.9%)
N3 4 lymph nodesmetastases	5 (4.4%)
Distant metastases status (pM)	
M1a Skin, subcutaneous tissue or lymph nodes beyond the regional LU	6 (5.3%)
M1b Lung metastases	
M1c Other localization	
Mx	107 (94.6%)

Patients and methods

A total of 113 clinical samples of formalin-fixed, paraffin embedded tissue (FFPE) with malignant melanomas were included in this study; 85 were primary tumors and 28 were metastatic infiltrated lymph nodes. Melanoma samples were collected from 62 men and 51 women diagnosed in 2015–2017 (Table 1). Clinical-pathological information obtained from the patients with malignant melanoma are presented in Table 1 and Supplementary Table S1. All studied formalin-fixed and paraffin embedded (FFPE) samples were collected from the archives of the Departments of Dermatovenereology and Pathology, University Hospital in Martin. The clinical-pathological data was extracted from the patient history. The lesion skin surface was examined in detail by dermatoscope and histological testing included basic immuno-histological examination (MelanA, HBM45, S100, VIM) [17]. Immuno-histopathologic parameters including the extent of the tumor (pT) and lymph node (pN) and distant metastasis status (pM) were recorded (Table 1). Histological staging and grading was performed according to the revised pTNM classification of the American Joint Committee on Cancer (AJCC) and the Union for International Cancer Control (UICC) [18]. All participants enrolled in our study gave written informed consent and the study was approved by the Ethics Committee of University Hospital in Martin.

DNA extraction. DNA from paraffin embedded tissue was isolated by the black PREP FFPE DNA kit following the manufacturer's protocol. The optimized procedure included the extra step of de-paraffinisation and DNA was measured on NanoDrop™ 2000/2000C (Thermo Fisher Scientific, Germany).

Table 2. Primer sequence, annealing temperature and length of the products used in this study.

Gene	Primer	Sequence	Annealing temperature (°C)	Product size (bp)
PPP6C, exon 7	Forward	F 5'-AAACTCATCTGCAGAGCACA	58	271
	Reverse	R 5'-AAGAAGAGGGCAGAAAAATG	58	271
STK19, exon 2	Forward	F 5'-GACAAGTTGACGCTCCTTC	58	233
	Reverse	R 5'-AGAGGATCCGACTCCACAG	58	233
RAC1, exon 2	Forward	F 5'-TGTGATGTATATGCCTTGATTTT	58	254
	Reverse	R 5'-AGCAAACAAATGGTCAAAG	58	254
BRAF, exon 15	Forward	F 5'-TGCTTGCTCTGATAGGAAAA	58	204
	Reverse	R 5'-TCAGTGGAAAAATAGCCTCA	58	204

Mutational screening of BRAF, STK19, PPP6C, RAC1 by Sanger sequencing. Exon 15 of the *BRAF* gene, exon 7 of *PPP6C* gene, exon 2 of *Rac1* gene and exon 2 in the *STK19* gene were amplified by forward and reverse primers. All primer sequences are listed in Table 2. After PCR amplification, PCR products were purified by NucleoSpin Extract II kit (Macherey-Nagel, Germany) according to manufacturer instructions. The same set of primers was used for sequencing reactions. Sequencing of genes *BRAF*, *PPP6C*, *Rac1* and *STK19* was by BigDye Terminator v3.1 Cycle Sequencing kit (Applied Biosystems, Ca, USA) on the ABI PRISM 3130x1 automatic sequencer (Applied Biosystems, CA, USA) as previously described, and sequence data analysis was by Chromas software (<http://www.technely-sium.com.au/chromas.html>).

Allele-specific PCR for verification of BRAF V600E. We used allele-specific PCR for confirmation of V600E mutation in the *BRAF* gene. This assay was previously established in our laboratory and the allele-specific PCR for the *BRAF* V600E mutation was adopted from Jasek et al. [19].

Two primers (forward, 5'-TCATAATGCTTGCTCTGATAGGA-3'; reverse, 5'-GGCCAAAATTTAATCAGT-GGA-3'), as described previously, were used to amplify a 224bp fragment of exon 15 in *BRAF* containing the site where the T1799A mutation occurs.

Two different forward primers with substitution of a single base at the end of the primer (5'-GTGATTTTGGTCTAGC-TACAGT-3' and 5'-TGATTTTGGTCTAGCTACAGA-3') were designed to amplify the wild-type allele or *BRAF* T1799A transversion mutation, respectively. The sequence of the reverse primer was the same as used before and PCR products were evaluated on 1.5% agarose gel and separated by gel electrophoresis (Figure 1). Confirmation of *BRAF* V600E mutation was obtained by allele-specific PCR at ABI 3500 (Applied Biosystems, USA).

Results

Table 1 and Supplementary Table S1 summarize the clinical characteristics for 113 cases and their complete molecular screening results. Genes (*STK19*, *PPP6C*, *RAC1* and *BRAF*) were evaluated in all samples by Sanger sequencing and only confirmed mutations were considered positive. *BRAF* V600E from all samples was verified by allele-specific PCR.

Clinical sample characteristics. We included 113 melanomas from 62 women and 51 men. The Mean age at diagnosis was 63.9 in males and 64 in females. The majority of melanomas (39.8%) had Breslow thickness of 2.1–4.0 mm and 62.8% were tumor stage T2 (n=26), and T3 (n=45) (Table 1). Most melanomas were superficial spreading melanomas (SSM) (48 of 113); thirty-four melanomas were nodular melanomas (ND); six were acral lentiginous melanoma (ALM); four were lentigo malignant melanoma (LMM); nine were unspecified type malignant melanomas (NS) and the in situ melanomas included one desmoplastic malignant melanoma (Table 1). Most melanomas were located on the back (n=51, 45.1%), followed by the upper limbs (n=23, 20.3%), lower limbs (n=26, 23%), the head, neck, ear and face (n=12, 10.6%). No mucosal melanomas were included in this study. Lymph node metastases status was positive in one lymph node (n=8); in 2–3 lymph nodes (n=9) and in 4 lymph nodes or intra-nasal metastases (n=5). Distant metastases were positive (n=6, Table 1).

Frequency of BRAF, STK19, PPP6C and RAC1 mutations in melanomas. In the prospective cohort of 113 patients, DNA was extracted from primary melanoma samples for mutation testing of genes *PPP6C* (exon 7), *RAC1* (exon 2), *STK19* (exon 2), *BRAF* V600E (exon 15); and included 28

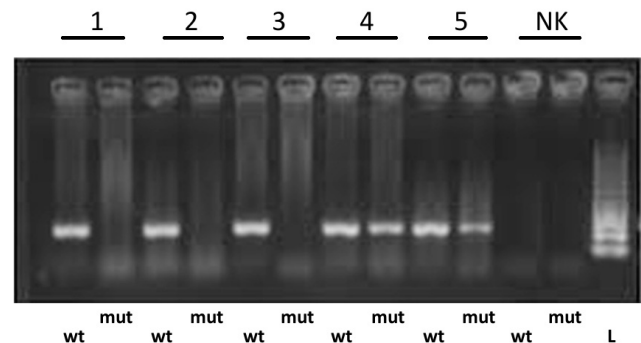


Figure 1. Allele-specific PCR for confirmation of BRAF V600E. Ladder marker (L), wild type (wt) from tissue (samples 1, 2, and 3), DNA from tissue isolated from patients with malignant melanoma carriers *BRAF* V600E (samples 4, 5), sample without DNA (NK-negative control); (1.5% agarose gel). PCR products were amplified with *BRAF* V600E specific primer in samples 4, 5.

lymph node metastases. *BRAF V600E* mutations in exon 15 detected by Sanger-sequencing were present in 13.2% (n=15) of melanomas. The *BRAF V600E* mutation was confirmed in all cases using allele-specific PCR.

In the remaining 113 cutaneous melanomas, the *RAC1 P29S* mutation in exon 2 was detected in two samples (1.8%) from all metastasis samples (n=28) and we also detected *BRAF V600E* in primary melanoma in one patient with *RAC1 P29S*. The median age of patients with *RAC1* mutation was 75 years. Both patients harboring *RAC1* mutation were females (1.8%). *RAC1* mutant tumors were of nodular melanoma (NM) subtype, and *RAC1* mutations had either ulceration or no ulcers (Supplementary Table S1).

Mutations in *PPP6C*, including the *R264C* mutation in exon 7, were found in 4/113 patients (3.5%). The *R264C* mutation was detected in three patients with primary tumors and these were all *BRAF V600E* positive in primary and metastatic tissues. Only one patient had a *R264C* driver mutation in metastases that was not present in the primary tumor. The median age of patients with *PPP6C* mutant melanoma was 60 years. *PPP6C* mutant tumors were of unspecified melanoma (NS), superficial spread melanoma (SSM) and nodular melanoma subtypes (NM – Supplemen-

tary Table S1). A variant in *STK19* and *G104R* exon 2 was found in 1/113 (0.9%) of patients; with the *G104R* variant detected in a primary tumor, so we used Variant Effect Predictor (Ensembl release 91-December 2017) to annotate this variant [20]. This *G104R* variant was predicted, with low confidence, to be a deleterious variant; the patient was a 63-year-old male with unspecified melanoma and ulceration (Supplementary Table S1).

Discussion

Identification of somatic driver mutations in malignant melanomas has improved genetic status and classification. Herein, we evaluated the presence of *RAC1*, *PPP6C*, *STK19*, and *BRAF* mutations. The most common *BRAF* mutation in malignant melanoma is the codon 600 valine to glutamate (*V600E*) substitution mutation [8]. We found 14 mutated samples from primary tumors and one from a metastatic lymph node which harbored *BRAF V600E* mutations, and we also recorded a previously unreported recurrent *BRAF* mutation in *RAC1* which resulted in a p.Pro29Ser substitution in 2 of the 113 tumors.

We therefore investigated the clinical and pathological associations of *RAC1 P29S* in this 113 malignant melanoma cohort with known *BRAF* mutation status. The *RAC1 P29S* mutation had 1.8% prevalence, increased Breslow thickness, greater mitotic activity, ulceration and nodular melanoma sub-type. The *RAC1 P29S* mutation was present in two melanomas; one in the patient's upper limb and the other on an ear. While this mutation was related to Breslow thickness [15], our study confirmed that *RAC1* mutations occur more frequently in metastatic tissues (1.8%). This was also proven in a study published by Mar et al. [15].

In the group of 113 samples (Tx–T4 tumors), two tumors were *RAC1* mutated; T4 stage in one patient and T2 in another. The *RAC1 P29S* was significantly more prevalent in female patients compared to Krauthammer et al's findings where some sun-exposed *RAC1* mutations were associated with males [13], but we found no evidence to support this gender association.

The activating mutation was associated with the nodular subtype in this cohort, similar to the report by Mar et al. [15]. *RAC1* mutations have an important role in human malignancy and early tumor invasion, and we found a genetic difference between primary and metastatic tumors in one patient who was tested for *RAC1* and *BRAF V600E* mutations. *BRAF V600E* was found in that primary tumor, while *RAC1* was in the regional lymph node. This implies that *RAC1* has an important role in melanoma progression through metastatic regulation [13, 21, 22].

The *G104R* variant in *STK19* was identified in one patient (0.9%) and this resulted in a p.Gly104Arg substitution of unspecified subtype. The *STK19* mutation was also present in one patient with 1.1 mm Breslow thick T2 stage primary tumor. Although there was low confidence in the predic-

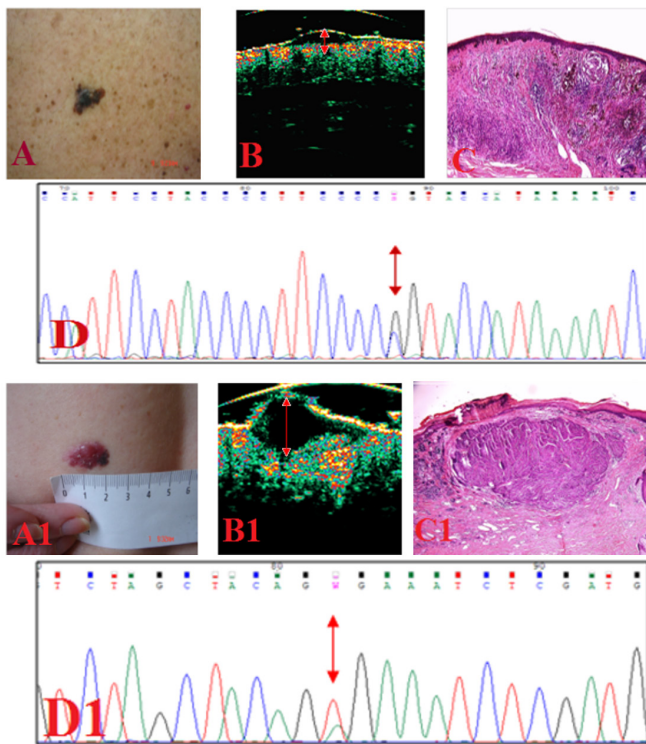


Figure 2. A, A1) Unspecified type of melanoma confirmed by sonography; B) Breslow 1.1mm; B1) Breslow 2.8mm; C, C1) Immunohistochemical staining of hematoxylineosin. D) Sequencing of *STK19* gene revealed *G104R* variant. This mutation was also confirmed by sequencing with reverse primers (D1). Sequencing of *BRAF* gene revealed *V600E* mutation. This mutation was also confirmed by sequencing with reverse primers.

tion of this mutation as a deleterious variant [20], relevant discrepancy exists in variant classification using *in-silico* prediction tools [20].

The *PPP6C R264C* mutation in exon 7 resulted in a p. Arg.264Cys amino-acid exchange, with 3.5% prevalence and increased mitotic activity. In this cohort, there were also 2 patients with ulceration, 2 with superficial melanoma spread subtype and 1 each with nodular melanoma and unspecified melanoma subtypes.

The *PPP6C R264C* mutation was present in four melanomas located on the trunk and upper and lower limbs, and occurred more frequently in patient primary tumors 3/113 (2.7 %) than in metastatic tissues 1/113 (0.9%). Our findings agree with Gold et al. [16] who found four *PPP6C* mutated tumors; two patients with T3 stage and two patients with T1 and T2. Herein, we observed the co-existence of *PPP6C* and *BRAF V600E* mutations in the primary and metastatic tumors in one patient, and it is suggested that these two mutations cooperate in cancer development. Our results indicate clinical heterogeneity in *PPP6C* mutation positive tumors, and while there could be co-existence of sub-populations of cancer cells that differ in their genetic characteristics, Gold et al. did not find strong evidence of association between *PPP6C* and *BRAF* mutations in primary and metastatic tumors [16]. Our data indicate clinical heterogeneity in *PPP6C* mutation positive tumors.

The study shows that we can detect mutations which are potential targets for therapy in malignant melanoma patients. This can lead to optimization of on-going therapy and improved patient survival in this serious oncological disease [16]. Shitara et al. performed molecular analysis of 61 melanomas in 2015 by Sanger Sequencing of the *BRAF*, *NRAS*, *C-KIT*, *PPP6C*, *STK19* and *RAC1* genes [23], and found that mutations in *RAC1*, including *P29S*, *PPP6C*, *STK19*, and *BRAF*, are more frequent in sun-exposed melanomas [23].

We also detected these gene mutations, although our samples were mostly composed of only intermittent sun-exposed melanomas on the trunk, upper and lower limbs and the ear. In contrast Shitara et al. found no mutations in *RAC1*, *PPP6C*, *STK19* genes in melanomas associated with intermittent sun-exposed melanomas [23]. Further, our results indicate that allele-specific PCR is more sensitive than Sanger sequencing [19, 24], so we used allele-specific PCR to detect *BRAF V600E* mutation. We performed allele-specific PCR only on *BRAF*, because it had already been applied by Jasek et al. [19].

However, Sanger sequencing and allele-specific PCR have lower sensitivity than NGS, so NGS will most likely replace the less sensitive methods. The main disadvantage of NGS is the professional expertise required for comprehensive analysis and the interpretation of the resultant data [25]. In the near future, we plan to compare and correlate these results with liquid biopsy. Although this analysis may not always reflect the complete pattern due to tumor heteroge-

neity, this very heterogeneity of melanoma cells enables the tumor to alter its microenvironment and escape therapeutic strategies. Histological examination still has an irreplaceable role in the diagnosis and management of cancer treatment, but liquid biopsy presents a milestone in personalized oncology because it can provide new benefits to patients with malignant melanoma and enable us to elucidate the molecular mechanisms involved in this serious disease.

Melanomas are heterogeneous malignant neoplasms, and despite recent insights into its genetics, further studies on driver mutations are required to improve knowledge of the genetic evolution of melanomas. This will aid melanoma classification and should reveal putative biomarkers and therapeutic targets. Finally, the study identified hotspot mutations in *RAC1*, *STK19*, *PPP6C* and *BRAF* genes in the tested melanoma samples and our combined results suggest that these genes have such an important role in melanoma pathogenesis that they should prove attractive therapeutic targets.

Supplementary information is available in the online version of the paper.

Acknowledgements: This work was supported by the Biomedical Center Martin (BioMed Martin) ITMS code 26220220187 project which is co-financed from EU sources and by the Slovak Research and Development Agency under the contracts no. APVV-16-0066 and no. APVV-14-0273.

References

- [1] BALCH CM, BUZAID AC, SOONG SJ, ATKINS MB, CASINELLI N et al. Final version of the American joint Committee on cancer staging system for cutaneous melanoma. <https://doi.org/10.1200/JCO.2001.19.16.3635>
- [2] JUNKINS-HOPKINS J. Malignant melanoma: molecular cytogenetics and their implications in clinical medicine. *J Am Acad Dermatol* 2010; 63: 329–332. <https://doi.org/10.1016/j.jaad.2010.04.044>
- [3] NIEZGODA A, NIEZGODA P, CZAJKOWSKI R. Novel Approaches to Treatment of Advanced Melanoma: A Review on Targeted Therapy and Immunotherapy. *Biomed Res Int* 2015; 2015: 851387. <https://doi.org/10.1155/2015/851387>
- [4] SHAH DJ, DRONCA RS. Latest advances in chemotherapeutic, targeted and immune approaches in the treatment of metastatic melanoma. *Mayo Clin Proc* 2014; 89: 504–519. <https://doi.org/10.1016/j.mayocp.2014.02.002>
- [5] DAVIES H, BIGNELL GR, COX C, STEPHENS P, EDKINS S et al. Mutations of the *BRAF* gene in human cancer. *Nature* 2002; 417: 949–954. <https://doi.org/10.1038/nature00766>
- [6] SMALLEY KS. Understanding melanoma signaling networks as the basis for molecular targeted therapy. *J Invest Dermatol* 2010; 130: 28–37. <https://doi.org/10.1038/jid.2009.177>
- [7] SPAGNOLA F, GHIORZO P, ORGIANO L, PASTORINO L, PICASSO V et al. *Onco Targets Ther* 2015; 8:157–168. <https://doi.org/10.2147/OTT.S39096>

- [8] KUMAR R, ANGELINI S, CZENE K, SAUROJA I, HAHKA-KEMPPINEN M et al. BRAF mutations in metastatic melanoma a possible association with clinical outcome. *Clin Cancer Res* 2003; 9: 3362–3368.
- [9] LEE JH, CHOI JW, KIM YS. Frequencies of BRAF and NRAS mutation are different in histological types and sites of origin of cutaneous melanoma: a meta analysis. *Br J Dermatol* 2011; 164: 776–784. <https://doi.org/10.1111/j.1365-2133.2010.10185.x>
- [10] ATKINSON V. Medical management of malignant melanoma. *Aust Prescr* 2015; 38: 74–78.
- [11] LUGOWSKA I, KOSELA-PATERCZYK H, KOZAK K, RUTKOWSKI P. Trametinib: a MEK inhibitor for management of metastatic melanoma. *Onco Targets Ther* 2015; 8: 2251–2259. <https://doi.org/10.2147/OTT.S72951>
- [12] HODIS E, WATSON IR, KRYUKOV GV, AROLD ST, IMIELINSKI M, et al. Landscape of driver mutations in melanoma. *Cell* 2012; 150: 251–263. <https://doi.org/10.1016/j.cell.2012.06.024>
- [13] KRAUTHAMMER M, KONG Y, HA BH, EVANS P, BACCHIOCCHI A et al. Exome sequencing identifies recurrent somatic RAC1 mutations in melanoma. *Nat Genet* 2012; 44: 1006–1014. <https://doi.org/10.1038/ng.2359>
- [14] JAFFE AB, HALL A. Rho GTPases: biochemistry and biology. *Annu Rev Cell Dev Biol* 2005; 21: 247–269. <https://doi.org/10.1146/annurev.cellbio.21.020604.150721>
- [15] MAR VJ, WONG SQ, LOGAN A, NGUYEN T, CEBON J et al. Clinical and pathological associations of the activating RAC1 P29S mutation in primary cutaneous melanoma. *Pigment Cell Melanoma Res* 2014; 27: 1117–1125. <https://doi.org/10.1111/pcmr.12295>
- [16] GOLD HL, WENGRD J, DE MIERA EV, WANG D, FLEMING N et al. PP6C hotspot mutations in melanoma display sensitivity to Aurora kinase inhibition. *Mol Cancer Res* 2014; 12: 433–439. <https://doi.org/10.1158/1541-7786.MCR-13-0422>
- [17] BOBROVSKA M, MINARIKOVA E, PLANK L. [Diagnosis of melanoma]. *Onkologia (Bratisl)* 2009; 4: 144–148.
- [18] SOBIN LH, WITTEKIND C. (Eds.). *TNM classification of malignant tumors*, 6th Edition. UICC-Wiley, New York 2002; p 264. ISBN 978-0-471-22288-0.
- [19] JASEK K, BUZALKOVA V, MINARIK G, STANCLOVA A, SZEPE P et al. Detection of mutations in the BRAF gene in patients with KIT and PDGFRA wild-type gastrointestinal stromal tumors. *Virchows Arch* 2017, 470: 29–36. <https://doi.org/10.1007/s00428-016-2044-4>
- [20] MCLAREN W, GIL L, HUNT SE, RIAT HS, RITCHIE GR et al. The Ensembl Variant Effect Predictor. *Genome Bio.* 2016; 17: 122. <https://doi.org/10.1186/s13059-016-0974-4>
- [21] SANZ-MORENO V, GADEA G, AHN J, PATERSON H, MARRA P et al. Rac activation and inactivation control plasticity of tumor cell movement. *Cell* 2008; 135: 510–523. <https://doi.org/10.1016/j.cell.2008.09.043>
- [22] DALTON LE, KAMARASHEV J, BARNGA-REMENTERIE RAMIREZ I, WHITE G, MALLIRI A et al. Constitutive RAC activation is not sufficient to initiate melanocyte neoplasia but accelerates malignant progression. *J Invest Dermatol* 2013; 133: 1572–1581. <https://doi.org/10.1038/jid.2013.23>
- [23] SHITARA D, TELL-MARTI G, BADENAS C, ENOKIHARA MMSS, ALOS L et al. Mutational status of naevus-associated melanomas. *Br J Dermatol* 2015; 173: 671–680. <https://doi.org/10.1111/bjd.13829>
- [24] PECOVA T, VORCAKOVA K, ZALIOVA M, BURJANINOVA T, MALICHEROVA B et al. Testicular cancer in Monozygotic Twin Brothers with Urticaria pigmentosa. *Acta Derm Venereol* 2018; 98: 528–529. <https://doi.org/10.2340/00015555-2861>
- [25] BEHJATI S, TARPEY PS. What is next generation sequencing? *Arch Dis Child Educ Pract Ed* 2013; 98: 236–238. <https://doi.org/10.1136/archdischild-2013-304340>

Detection of driver mutations in FFPE samples from patients with verified malignant melanoma

B. MALICHEROVA^{1,2,*}, T. BURJANIVOVA^{1,2,#}, E. MINARIKOVA³, I. KASUBOVA^{1,2}, T. PECOVA³, M. BOBROVSKA⁴, I. HOMOLA⁵, Z. LASABOVA^{1,2,6}, L. PLANK^{1,2,4}

Supplemental material

Supplementary Table S1. Association between *RAC1*, *STK19*, *PPP6C*, *BRAF* with clinico-histopathological data.

Case	Gender	Genes	Mutations in genes <i>RAC1</i> , <i>PPP6C</i> , <i>STK19</i> (Sanger seq.)	<i>BRAF V600E</i> (Sanger seq. + allele- specific PCR)	Subtype	Localization	Breslow/Clark	TNM	Mitotic activity
12. H	Female	<i>RAC1</i>	<i>P29S</i> in metastase	no	ND	Upper limbs	5mm/Clark IV	pT4a pNx pMx	30mf/mm ²
16. H	Female	<i>RAC1</i>	<i>P29S</i> in metastase	<i>BRAF V600E</i> in primary tumor	ND	Ear	2mm/Clark IV	pT2a pNx pMx	4mf/mm ²
45.	Male	<i>PPP6C</i>	<i>R264C</i> in primary tumor	no	NS	Upper limbs	2.6mm/ClarkIV	pT3b pN0 pMx	8-9mf/mm ²
5.1.0	Female	<i>PPP6C</i>	<i>R264C</i> in metastase	<i>BRAF V600E</i> in metastase	SSM	Trunk	1.1mm/ClarkIV	pTx pN2b pMx	5mf/mm ²
55.	Female	<i>PPP6C</i>	<i>R264C</i> in primary tumor	no	SSM	Lower limbs	1.3mm/ClarkIV	pT2a pNx pMx	11mf/mm ²
12.1	Male	<i>PPP6C</i>	<i>R264C</i> in primary tumor	<i>BRAF V600E</i> in primary tumor	ND	Lower limbs	3.1mm/ClarkIV	pT3a pNx pMx	8mf/mm ²
76	Male	<i>STK19</i>	<i>G104R</i> in primary tumor	no	NS	Trunk	1.1mm/ClarkIII	pT2a pN0 pMx	1mf/mm ²
9.	Female	<i>BRAF</i>	no	<i>BRAF V600E</i> in primary tumor	ND	Lower limbs	12mm/Clark IV	pTx pNx pM1	4mf/mm ²
21.	Female	<i>BRAF</i>	no	<i>BRAF V600E</i> in primary tumor	SSM	Upper limbs	40mm/ Clark V	pT4b pN1a pMx	4-8mf/mm ²
22.	Male	<i>BRAF</i>	no	<i>BRAF V600E</i> in primary tumor	ND	Lower limbs	1.2mm/ Clark III	pT2a pNx pMx	1mf/mm ²
24.	Female	<i>BRAF</i>	no	<i>BRAF V600E</i> in primary tumor	NS	Trunk	2mm/Clark IV	pT2a pNx pMx	4mf/mm ²
25.	Female	<i>BRAF</i>	no	<i>BRAF V600E</i> in primary tumor	SSM	Lower limbs	1.8mm/Clark IV	pT2a pN0 pMx	4mf/mm ²
32.	Female	<i>BRAF</i>	no	<i>BRAF V600E</i> in primary tumor	ALM	Lower limbs	11.5mm/ Clark IV	pT4b pN2c pMx	15mf/mm ²
47.	Male	<i>BRAF</i>	no	<i>BRAF V600E</i> in primary tumor	SSM	Trunk	1.2mm/ Clark IV	pT2a pN0 pMx	1mf/mm ²
7.0	Male	<i>BRAF</i>	no	<i>BRAF V600E</i> in primary tumor	SSM	Trunk	3.1mm/Clark IV	pT3a pNx pMx	8mf/mm ²
59.	Male	<i>BRAF</i>	no	<i>BRAF V600E</i> in primary tumor	SSM	Trunk	3.9mm/ Clark IV	pT3a pNx pMx	18mf/mm ²
79.	Female	<i>BRAF</i>	no	<i>BRAF V600E</i> in primary tumor	ALM	Lower limbs	3.9mm, Clark IV	pT3b pN2c pMx	8-25mf/mm ²
81.	Female	<i>BRAF</i>	no	<i>BRAF V600E</i> in primary tumor	NS	Trunk	7.8mm/Clark IV	pT3b pN0 pMx	12mf/mm ²
75.	Male	<i>BRAF</i>	no	<i>BRAF V600E</i> in primary tumor	ND	Lower limbs	7.8mm/Clark IV	pT4b pNx pMx	20mf/mm ²

F – Female; M – male; ND – nodular melanoma; SSM – superficial spread melanoma; NS – unspecified melanoma; ALM – acral lentiginous melanoma; T2a, T3a – without ulceration; T3b, T4b – with ulceration.